

On the Tigers Trail

Delhi-Bandhavgarh-Kanha-Pench-Delhi

DAY 1 ARRIVE DELHI

Arrive Delhi. Upon arrival in Delhi you will be received and taken to the hotel

Meals included: None

Overnight:

DAY 2 DELHI



Today late morning or afternoon you will do a guided tour of Delhi and visit parts of Old Delhi – visiting Jama Mosque and Red Fort. If time permits enjoy rickshaw ride in the by-lanes of the old city and later visit parts of New Delhi – visiting Humayun’s Tomb and drive past Government buildings.

In Delhi shopping possibilities are enormous. You may explore the city for its jewellery, and precious stone jewellery, shawls/pashmina, products for the home like furnishings and cutlery, but also a range of their own homemade jams/chutneys and handicrafts of various parts of the country.

Meals included: Breakfast

Overnight:

DAY 3 DELHI-JABALPUR-BANDHAVGARH NATIONAL PARK

Morning you will be escorted to the airport in time to connect your flight (DN-503; Departing Delhi at 0555; Arriving Jabalpur at 0850 hours). You will be met upon arrival and transferred to Bandhavgarh National Park (approximately 4 hours driving distance).

Set amidst the Vindhyan ranges, the park covers an area of 437 sq. km. and has a series of ridges running through it. About half the park is covered with fine stands of Sal while mixed forests are found in the higher reaches of the hills. Stretches of bamboo and grasslands are found throughout. The main view area is still in the core of the park with its 32 picturesque wooded hills.

There are more than 22 species of mammals and 250 species of birds. Common langurs and rhesus macaque represent the primate group. Carnivores include the Asiatic Jackal, Bengal Fox, Sloth Bear, Ratel, Grey Mongoose, Striped Hyena, Jungle Cat, Leopard and of course the most famous of all the Royal Bengal Tiger. The other animals spotted in the park are Wild Boar, Spotted Deer, Sambhar, Nilgai, Chinkara and Gaur. The vegetation along streams and marshes is rich in bird-life. The common ones are little Grebe, Egret, Lesser Adjutant, Sarus Crane, Black Ibis, Lesser Whistling Teal, White-eyed Buzzard, Black Kite, Crested Serpent Eagle, Black Vulture, Egyptian Vulture, Common Peafowl, Red Jungle Fowl, Dove, Parakeet, Kingfisher and Indian Roller. Reptilian fauna include Cobra, Krait, Viper, Rat snake, Python, Turtle and a number of lizard species.

Meals included: All Meals

Overnight:

DAY 4 BANDHAVGARH NATIONAL PARK



Morning enjoy a game in the National Park. Midday is free for walks in and around the Lodge. Afternoon enjoy a game drive in the National Park.

Meals included: All Meals

Overnight:

DAY 5 BANDHAVGARH NATIONAL PARK

Morning enjoy a game in the National Park. Midday is free for walks in and around the Lodge. Afternoon enjoy a game drive in the National Park.

Meals included: All Meals

Overnight:

DAY 6 BANDHAVGARH NATIONAL PARK-KANHA NATIONAL PARK

Morning enjoy a game drive in the National Park. After breakfast drive to Kanha National Park (approximately 6 hours driving distance).

Kanha is one the largest national parks in India extending over 1945 sq. km. of undulating country, which includes a core area of 940 sqkm. Kanha has some 22 species of mammals. The most easily spotted are the striped palm squirrel, common langur, jackal, wild pig, chital or spotted deer, barasingha or swamp deer, sambhar and black buck. Less commonly seen species are tiger, Indian hare, dhole or Indian wild dog, barking deer and Indian bison or gaur. Other animals found in the park are Indian fox, sloth bear, striped hyena, jungle cat, panther, mouse deer, four-horned antelope, porcupine and wolf. Kanha has some 200 species of birds. The commonly seen species of birds include cattle egret, pond heron, black ibis, common peafowl, crested serpent eagle, racket-tailed drongo, hawk eagle, various species of fly-catcher, woodpecker, pigeon, dove, parakeet, babbler, mynah, Indian roller, white-breasted kingfisher and grey hornbill.



Meals included: All Meals

Overnight:

DAY 7 KANHA NATIONAL PARK

Mornings enjoy a game drive in the National Park; midday is free for walks in and around the lodge; afternoon enjoy your second game drive of the day....

Meals included: All Meals

Overnight:

DAY 8 KANHA NATIONAL PARK

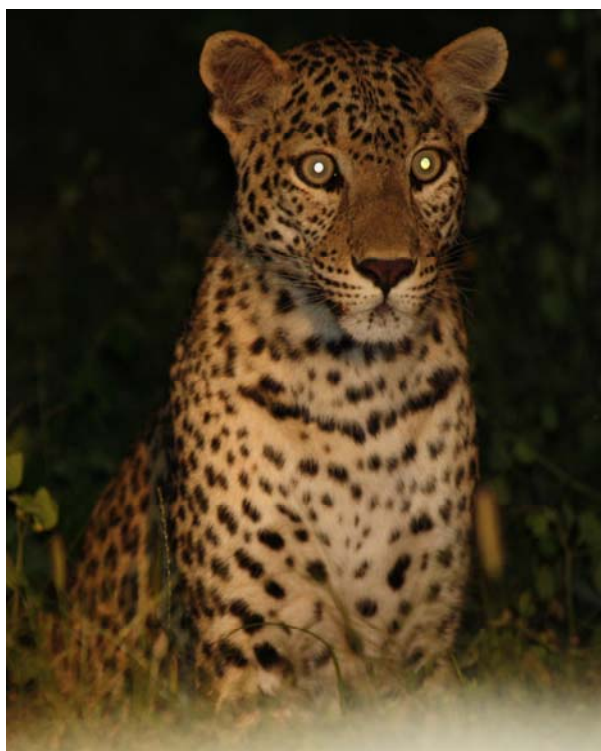
Mornings enjoy a game drive in the National Park; midday is free for walks in and around the lodge; afternoon enjoy your second game drive of the day....

Meals included: All Meals

Overnight:

DAY 9 KANHA NATIONAL PARK-PENCH NATIONAL PARK

Morning enjoy a game drive in the National Park. After breakfast drive to Pench National Park (approximately 4 hours driving distance).



Pench National Park is nestled in the lower southern reaches of the Satpura hills; the park is named after Pench River which flows from North to South through the National Park and covers a total of 760 sq kilometres of land. With a core area of 292 sq kilometres, it is a mix of moist deciduous and dry deciduous teak forest. Various water streams cross the forest with The Pench Reservoir at the centre of the park being the main water source. The main flora of the park include: teak and its associates Moyan, Mahua, Mokha, Skiras, Tendu, Bija, Achar, Garari, Aonla, Bhaman, Baranga, Amaltas, Bhirra, Palas. Bamboo occurs sparsely restricted to some valleys. Main fauna

includes: Tiger, Leopard, Jungle Cat, Leopard Cat, Striped Hynae, Wild Dog, Wolf, Jackals, Sloth Bear, Pangolin, Mongoose, Wild Boar, Gaur, Blue Bull, Spotted Deer, Sambar, Barking Deer, Porcupine etc. The reptiles include: Fresh Water crocodiles, Indian Chameleon, Common Krait, Indian Rock Python, Cobra, Indian Flap Shell turtle, Peninsular Black turtle etc. Fish include: Padhan, Jhunda, Sanbal, Chalar, Dadai. Mahur, Kunda, Mrigal, Rohu, Calbasu, and Mahasir etc. Birdlife includes: Malabar Pied Hornbills, Grey Hornbills, Crested Serpent Eagle, Vultures, Paradise Fly Catchers, Drongos, Minivets, Golden Orioles, and around 250 more species of birds are commonly seen.

Meals included: All Meals

Overnight:

DAY 10 PENCH NATIONAL PARK

Morning enjoy a game in the National Park. Midday is free for walks in and around the lodge. Afternoon enjoy a game drive in the National Park.

Meals included: All Meals

Overnight:

DAY 11 PENCH NATIONAL PARK



Morning enjoy a game in the National Park. Midday is free for walks in and around the lodge. Afternoon enjoy a game drive in the National Park.

Meals included: All Meals

Overnight:

DAY 12 PENCH NATIONAL PARK-NAGPUR-DELHI

Morning enjoy game drive in the Park .In the late afternoon, you will be driven to Nagpur (approx 02 hours drive) for your flight to Delhi (9W 368 Departure Nagpur 2030 hrs Arrival Delhi 2200 hrs). On arrival in Delhi, you will be transferred to your hotel

Meals included: Breakfast & Lunch

Overnight:

DAY 13 DELHI-ONWARD DESTINATION

Today very early morning you will be transferred to the International Airport for your flight back home.

*****End of the arrangements*****